

# The Big Trees of St. Joseph County

## Trees eligible for nomination

- |   |   |
|---|---|
| <b>Ash.....</b><br>Blue<br>Black<br>Green<br>White                                      | <b>Honeylocust</b><br><b>Hophornbeam, American</b><br><b>Hornbeam, American</b><br><b>Juneberry</b><br><b>Kentucky Coffeetree</b> |
| <b>Aspen.....</b><br>Bigtooth<br>Quaking  | <b>Locust.....</b><br>Black   |
| <b>Basswood, American</b>   | <b>Maple.....</b><br>Boxelder   |
| <b>Beech, American</b>  | Black   |
| <b>Birch.....</b><br>River<br>Yellow<br>Gray  | Red<br>Silver<br>Sugar  |
| <b>Black Gum</b>  | <b>Mulberry, Red</b>  |
| <b>Buckeye, Ohio</b>  | <b>Oak.....</b><br>Black<br>Bur<br>Chinquapin   |
| <b>Butternut</b>  | Jack<br>Pin<br>Red<br>Scarlet   |
| <b>Eastern Red Cedar</b>  | Shingle<br>Swamp white<br>White   |
| <b>Cherry.....</b><br>Black<br>Pin  | <b>Pawpaw</b>   |
| <b>Cottonwood.....</b><br>Eastern<br>Swamp  | <b>Pine, Eastern White</b>  |
| <b>Dogwood, Flowering</b>   | <b>Plum, American</b>   |
| <b>Elm.....</b><br>American<br>Rock<br>Slippery   | <b>Poplar, Balsam</b>   |
| <b>Hackberry</b>  | <b>Redbud</b>   |
| <b>Hawthorn.....</b><br>Cockspur<br>Dotted<br>Downy                                     | <b>Sassafras</b><br><b>Sycamore</b><br><b>Tamarack</b><br><b>Tulip</b>  |
| <b>Hickory.....</b><br>Bitternut<br>Mockernut<br>Pignut<br>Red<br>Shagbark<br>Shellbark | <b>Walnut, Black</b><br><b>Willow.....</b><br>Black<br>Peachleaf  |



Help find the  
**BIGGEST**  
trees in  
St. Joseph County

Nominate a  
tree near you!

The Big Trees of St. Joseph County is coordinated by St. Joseph County Parks— Interpretive Services Division

# Help find the Big Trees of St. Joseph County

Join in the fun...Find the biggest trees in St. Joseph County. Certificates are awarded to the owners and nominators of each champion tree. And, every five years the printed listing of county champion trees is updated, so we are always looking for **bigger trees!**

## To nominate a tree, it must be...

- a living tree growing within the county
- a native tree species for our county – ornamentals are excluded. A list of eligible species is included on the back of this brochure.

## If you need assistance identifying your tree

Bring a twig with leaves to

- Bendix Woods County Park in New Carlisle, 574/654-3155
- Rum Village Nature Center in South Bend, 574/235-9455
- St. Joseph County Soil and Water Conservation District in Plymouth, 574-936-2024 ext. 4

We suggest pressing the twig between the pages of heavy books so the leaves do not curl as they dry. If the naturalists are unavailable when you drop off your specimen, please leave your name and number so they can get back to you.

## Submitting your entry

Fill out the attached nomination form and mail it to St. Joseph County Parks, 32132 SR 2, New Carlisle, IN 46552, Attn. Big Trees.

Your nomination will be confirmed by post card. If it is close to being a county champion, a park interpreter or other natural resource professional will come to confirm the measurements of the tree in the fall.

## Your tree may qualify for state recognition

The Big Trees of St. Joseph County follows the same rules as the Indiana State Big Tree Program administered by the DNR. All county champions will be compared to the current state champion list for possible submission.

## Make your own tree measuring stick

To download instructions on how to make a tree measuring stick, visit [www.extension.purdue.edu/stjoseph](http://www.extension.purdue.edu/stjoseph), click on "Education Store" and search for Booklet FNR-4-W.

**The Big Trees of St. Joseph County**  
is a cooperative program of:

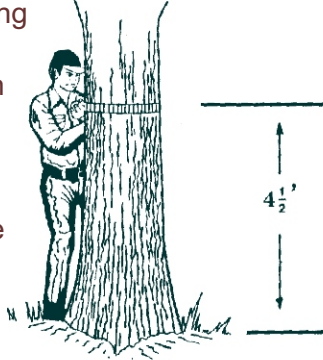
St. Joseph County Parks  
Purdue Extension: St. Joseph County  
St. Joseph County Soil and Water Conservation District  
Rum Village Nature Center  
The University of Notre Dame  
Department of Biological Sciences

# How To Measure Your Entry

To complete the nomination form you must include basic measurements of your tree.

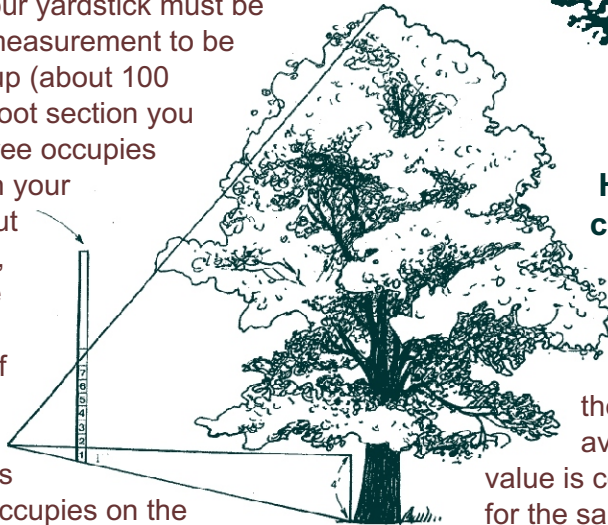
## Measuring the circumference

Use a tape measure or string to measure the girth or circumference of the tree in inches, 4 ½ feet off the ground. If the tree has a divided trunk at that height, measure the circumference below the split. If the tree is on a slope, measure from the uphill side.



## Measuring the height

With ribbon, yarn or masking tape, mark a visible spot on the tree trunk 4 feet from the ground. Hold a yardstick vertically, at a comfortable arm's distance and back away from the tree. Your yardstick must be straight for the measurement to be accurate. Back up (about 100 feet) until the 4 foot section you marked on the tree occupies exactly 1 inch on your yardstick. Without moving the stick, sight to the base of the tree and then to the top of the tree to determine how many inches the tree height occupies on the yardstick. Multiply the number of inches by 4 to determine your tree's height in feet.



## Determining the average crown spread

Walk beneath the tree to determine where the crown is widest. Mark the crown's edge on the ground and measure the distance to the far edge of the crown, passing along the base of the tree. Do the same for the narrowest spread of the crown. Remember the crown spread passes in a straight line through the center of the tree. Add the two distances and divide the sum by 2 to obtain the average width of the tree's crown.



## How do we determine champions?

A point value is assigned to your tree using the following formula: the circumference in inches, plus the height in feet, plus 1/4 of the average crown spread. This point value is compared to other nominations for the same tree species. If your nomination is in contention for a county record we will come out to verify the tree's measurements.

# The Big Trees of St. Joseph County – Nomination Form

Return to:

Big Trees, c/o St. Joseph County Parks, 32132 SR 2, New Carlisle, IN 46552

Phone: 574-654-3155 Fax: 574/654-3674

Entries are due September 1 to be eligible for the current listing. You may nominate more than one tree; however, each entry must be on a separate form.

Tree species (common name, be specific) \_\_\_\_\_

Scientific name, if known \_\_\_\_\_

Nearest street address and town of tree location \_\_\_\_\_

Is the tree visible from the road? YES NO

Name of nominator \_\_\_\_\_ Daytime phone \_\_\_\_\_

Address \_\_\_\_\_ City \_\_\_\_\_ Zip \_\_\_\_\_

Email address \_\_\_\_\_

Name of owner \_\_\_\_\_ Daytime phone \_\_\_\_\_

Address \_\_\_\_\_ City \_\_\_\_\_ Zip \_\_\_\_\_

If different from nominator, is the owner aware that you are nominating this tree?

YES NO

Has the owner given permission of the public to view the tree? YES NO

## Tree Dimensions

Circumference at 4 ½ feet \_\_\_\_\_ inches Height \_\_\_\_\_ ft. \_\_\_\_\_ in.

Average Crown Spread in inches \_\_\_\_\_ inches Date measured \_\_\_\_\_

Condition of tree when measured \_\_\_\_\_

A photo of your tree would be extremely helpful. Please send digital photos to [afarrough@sjcparks.org](mailto:afarrough@sjcparks.org).

Please enclose a map of the location of the tree. The map may be hand-drawn, as long as it is legible.

Staff use: Date Received \_\_\_\_\_ Verified by \_\_\_\_\_ Point Index \_\_\_\_\_



Purdue Extension  
St. Joseph County



St. Joseph County Soil &  
Water Conservation District



Nature  
Center

The University of  
Notre Dame  
Department of  
Biological Sciences